

Wheeled Excavator

# A 924 Heavy Lift

Litronic®

**Operating Weight**

58,900 – 60,600 lb

**Engine**

215 HP (l)/160 kW

Stage Tier 4f

**Bucket Capacity**

0.98 – 2.22 yd<sup>3</sup>



# LIEBHERR

# Technical Data



## Diesel Engine

<b>Rating per SAE J1349/ISO 9249</b>	215 HP (l) (160 kW) at 1,700 rpm
<b>Model</b>	Liebherr D934
<b>Type</b>	4 cylinder in-line
Bore/Stroke	4.8/5.9 in
Displacement	427.2 in <sup>3</sup>
<b>Engine operation</b>	4-stroke diesel Common-Rail turbo-charged and after-cooled reduced emissions
<b>Air cleaner</b>	dry-type air cleaner with pre-cleaner, primary and safety elements
<b>Engine idling</b>	sensor controlled
<b>Electrical system</b>	
Voltage	24 V
Batteries	2 x 135 Ah/ 12 V
Alternator	three-phase current 28 V/ 140 A
<b>Stage Tier 4f</b>	
Harmful emissions values	in accordance with EPA/CARB-40CFR stage Tier 4f
Emission control	Liebherr-SCR technology
Option	Liebherr particle filter
Fuel tank	87 gal
Urea tank	12 gal



## Cooling System

<b>Diesel engine</b>	water-cooled compact cooling system consisting cooling unit for water, hydraulic oil and charge air with stepless thermostatically controlled fan
----------------------	--



## Hydraulic Controls

<b>Power distribution</b>	via control valves in single block with integrated safety valves
<b>Servo circuit</b>	
Equipment and swing	with hydraulic pilot control and proportional joystick levers
Chassis	electroproportional via foot pedal
<b>Additional functions</b>	via switch or electroproportional foot pedals
<b>Proportional control</b>	proportionally acting transmitters on the joysticks for additional hydraulic functions



## Hydraulic System

<b>Hydraulic pump</b>	for equipment and travel drive	2 Liebherr axial piston variable displacement pumps (double construction)
Max. flow		2 x 61 gpm
Max. pressure for swing drive		5,076 psi, PowerLift 5,511 psi reversible axial piston variable displacement pump, closed-loop circuit
Max. flow		37 gpm
Max. pressure		6,092 psi
<b>Hydraulic pump regulation and control</b>		Liebherr-Synchron-Comfort-system (LSC) with electronic engine speed sensing regulation, pressure and flow compensation, torque controlled swing drive priority
<b>Hydraulic tank</b>		46 gal
<b>Hydraulic system</b>		max. 114 gal
<b>Hydraulic oil filter</b>		1 main return filter with integrated partial micro filtration (5 µm)
<b>MODE selection</b>		adjustment of engine and hydraulic performance via a mode pre-selector to match application, e.g. for especially economical and environmentally friendly operation or for maximum digging performance and heavy-duty jobs
S (Sensitive)		mode for precision work and lifting through very sensitive movements
E (Eco)		mode for especially economical and environmentally friendly operation
P (Power)		mode for high performance with low fuel consumption
P+ (Power-Plus)		mode for highest performance and for very heavy duty applications, suitable for continuous operation
<b>Engine speed and performance setting</b>		stepless alignment of engine output and hydraulic power via engine speed
Option		Tool Control: 20 preadjustable pump flows and pressures for add-on attachments



## Swing Drive

<b>Drive</b>	Liebherr axial piston motor in a closed system, Liebherr planetary reduction gear
<b>Swing ring</b>	Liebherr, sealed race ball bearing swing ring, internal teeth
<b>Swing speed</b>	0 – 10.0 rpm stepless
<b>Swing torque</b>	56,055 lbf ft
<b>Holding brake</b>	wet multi-disc (spring applied, pressure released)
<b>Option</b>	pedal controlled positioning swing brake slewing gear brake Comfort



## Operator's Cab

<b>Cab</b>	ROPS safety cab structure (roll-over protection system) with individual windscreens or featuring a slide-in subpart under the ceiling, work headlights integrated in the ceiling, a door with a sliding window (can be opened on both sides), large stowing and depositing possibilities, shock-absorbing suspension, sounddamping insulating, tinted laminated safety glass, separate window shades for the sunroof window and windscreen
<b>Operator's seat Standard</b>	air cushioned operator's seat with 3D-adjustable armrests, headrest, lap belt, seat heater, manual weight adjustment, adjustable seat cushion inclination and length and mechanical lumbar vertebrae support
<b>Operator's seat Comfort (Option)</b>	in addition to operator's seat standard: lockable horizontal suspension, automatic weight adjustment, adjustable suspension stiffness, pneumatic lumbar vertebrae support and passive seat climatization with active coal
<b>Operator's seat Premium (Option)</b>	in addition to operator's seat comfort: active electronic weight adjustment (automatic re-adjustment), pneumatic low frequency suspension and active seat climatization with active coal and ventilator
<b>Control system</b>	joysticks with control consoles and swivel seat, folding left control console
<b>Operation and displays</b>	large high-resolution operating unit, self-explanatory, color display with touchscreen, video-compatible, numerous setting, control and monitoring options, e.g. air conditioning control, fuel consumption, machine and attachment parameters
<b>Air-conditioning</b>	automatic air-conditioning, recirculated air function, fast de-icing and demisting at the press of a button, air vents can be operated via a menu; recirculated air and fresh air filters can be easily replaced and are accessible from the outside; heating-cooling unit, designed for extreme outside temperatures, sensors for solar radiation, inside and outside temperatures



## Undercarriage

<b>Drive</b>	oversized two speed power shift transmission with additional creeper speed, Liebherr axial piston motor with functional brake valve on both sides
<b>Pulling force</b>	29,000 lbf
<b>Travel speed</b>	0 – 2.2 mph stepless (creeper speed off-road) 0 – 4.3 mph stepless (off-road) 0 – 8.1 mph stepless (creeper speed on-road) 0 – 12.4 mph stepless (road travel)
<b>Driving operation</b>	automotive driving using accelerator pedal, cruise control function: storage of variable accelerator pedal positions, both off-road and on-road
<b>Axes</b>	manual or automatic hydraulically controlled front axle oscillation lock
<b>Service brake</b>	two circuit travel brake system with accumulator; wet and backlash-free disc brake
<b>Automatic digging brake</b>	works automatically when driving off (accelerator pedal actuation) and when the machine is stationary (engagement); the digging brake engages automatically – can be coupled with automatic swing axle lock
<b>Holding brake</b>	wet multi-disc (spring applied, pressure released)
<b>Stabilization</b>	rear stabilizer blade + front outriggers rear outriggers + front stabilizer blade rear + front outriggers
<b>EW-undercarriage</b>	9'



## Equipment

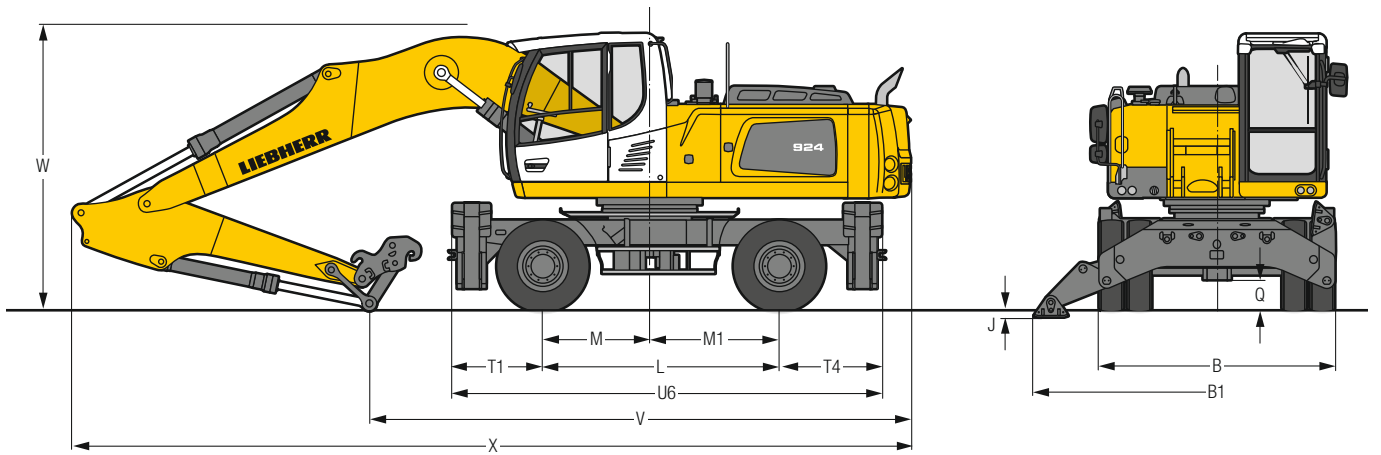
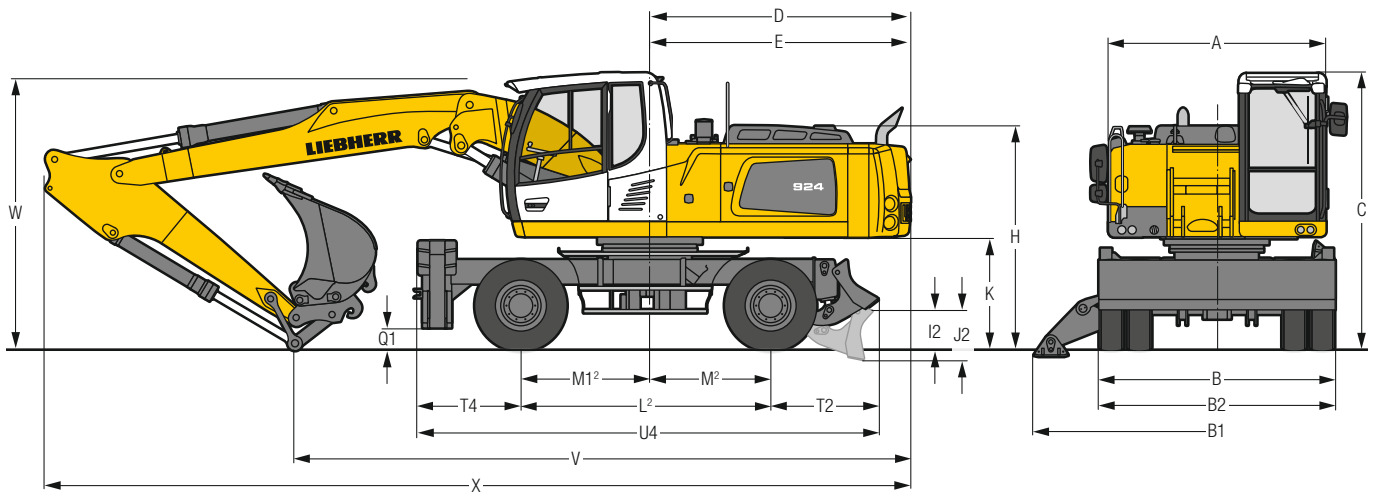
<b>Type</b>	high-strength steel plates at highly stressed points for the toughest requirements. Complex and stable mountings of equipment and cylinders
<b>Hydraulic cylinders</b>	Liebherr cylinders with special seal system as well as shock absorption
<b>Bearings</b>	sealed, low maintenance



## Complete Machine

<b>Lubrication</b>	Liebherr central lubrication system for upper-carriage and equipment, automatically
<b>Noise emission</b>	
ISO 6396	$L_{pA}$ (inside cab) = 72 dB(A)
2000/14/EC	$L_{WA}$ (surround noise) = 104 dB(A)

# Dimensions



	ft in
<b>A</b>	8' 3"
<b>B</b>	9'
<b>B1</b>	14'
<b>B2</b>	9'
<b>C</b>	10' 7"
<b>D</b>	9'11"
<b>E</b>	9'11"
<b>H</b>	8' 7"
<b>I2</b>	1' 6"
<b>J</b>	3"
<b>J2</b>	1'11"
<b>K</b>	4' 2"
<b>L</b>	9'
<b>L<sup>2)</sup></b>	9' 6"
<b>M</b>	4' 1"
<b>M<sup>2)</sup></b>	4' 7"
<b>M1</b>	4'11"
<b>M1<sup>2)</sup></b>	4'11"
<b>Q</b>	1' 2"
<b>Q1</b>	10"
<b>T1</b>	3' 5"
<b>T2</b>	4' 2"
<b>T4</b>	3'11"
<b>U4</b>	17' 7"
<b>U6</b>	16' 4"

<sup>2)</sup> Undercarriage – rear blade + front outriggers

E = Tail radius

Tires 11.00-20

	Stick ft in	Two-piece boom 19' HD	
		Rear blade + front outriggers ft in	Rear + front outriggers ft in
<b>V</b>	7'5"	25'7"	25'7"
	8'	24'5"	24'5"
	8'8"	23'5"	23'5"
	10'	22'6"	22'6"
<b>W</b>	7'5"	10'4"	10'4"
	8'	10'4"	10'4"
	8'8"	10'4"	10'4"
	10'	10'6"	10'6"
<b>X</b>	7'5"	33'2"	33'2"
	8'	33'2"	33'2"
	8'8"	33'2"	33'2"
	10'	33'	33'

	Stick ft in	Mono boom 18'6" HD	
		Rear blade + front outriggers ft in	Rear + front outriggers ft in
<b>V</b>	7'5"	21' 8"	21' 8"
	8'	21' 2"	21' 2"
	8'8"	20' 8"	20' 8"
	10'	22' 8" <sup>1)2)</sup>	22' 8" <sup>1)2)</sup>
<b>W</b>	7'5"	10' 8"	10' 8"
	8'	10'10"	10'10"
	8'8"	11"	11"
	10'	11' <sup>1)</sup>	11' <sup>1)</sup>
<b>X</b>	7'5"	32'	32'
	8'	32'	32'
	8'8"	32"	32"
	10'	32' 2" <sup>1)</sup>	32' 2" <sup>1)</sup>

Dimensions are with equipment over steering axle

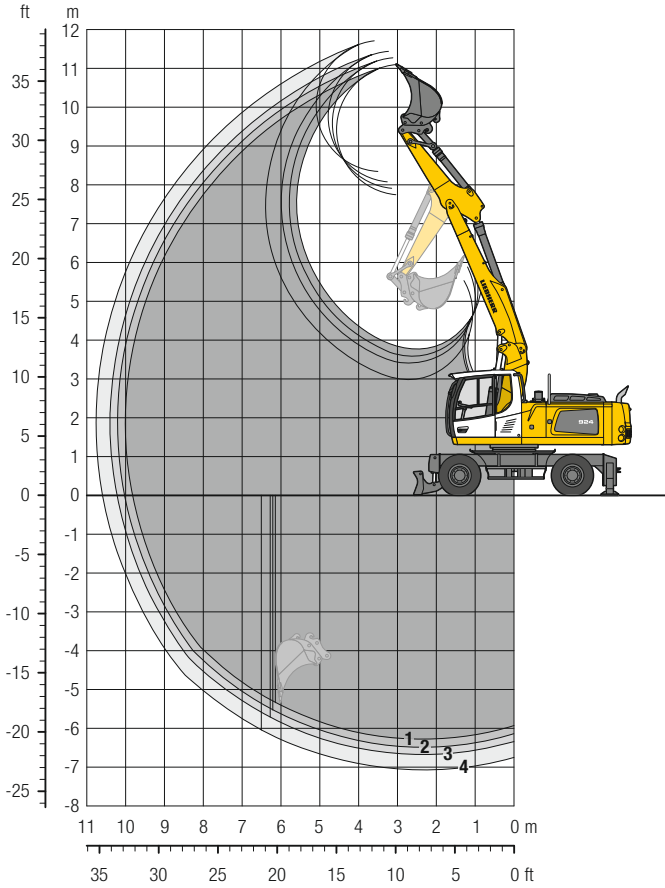
\* Equipment over digging axle for shorter transport dimensions

<sup>1)</sup> without quick coupler

<sup>2)</sup> tipping cylinder retracted

W = Max. ground clearance including approx. 6" piping

# Backhoe Bucket with Two-Piece Boom 19' HD



## Digging Envelope

with quick coupler		1	2	3	4
Stick length	ft in	7'5"	8'	8'8"	10'
Max. digging depth	ft in	20'8"	21' 4"	22'	23'2"
Max. reach at ground level	ft in	32'4"	33'	33'8"	34'9"
Max. dumping height	ft in	25'5"	25'11"	26'5"	27'5"
Max. teeth height	ft in	36'5"	36'11"	37'7"	38'5"
Min. equipment radius	ft in	10'8"	10' 4"	10'2"	10'4"

## Digging Forces

without quick coupler		1	2	3	4
Max. digging force (ISO 6015)	lbf	33,384	31,406	29,652	26,707
	lb	33,290	31,300	29,540	26,680
Max. breakout force (ISO 6015)	lbf	38,128	38,128	38,128	38,128
	lb	38,140	38,140	38,140	38,140

Max. breakout force with ripper bucket 49,098 lbf (49,160 lb)

## Operating Weight

The operating weight includes the basic machine with 8 tires plus intermediate rings, two-piece boom 19' m (HD), stick 8', quick coupler SWA 48 and bucket 55.1"/1.77 yd<sup>3</sup>.

Undercarriage versions	Weight (lb)
A 924 Heavy Lift Litronic with rear blade + front outriggers	59,700
A 924 Heavy Lift Litronic with rear + front outriggers	60,400

## Buckets Machine stability per ISO 10567\* (75% of tipping capacity)

Cutting width in	Capacity ISO 7451 <sup>1)</sup> yd <sup>3</sup>	Weight lb	Stabilizers raised				Rear blade + front outriggers down				Rear + front outriggers down			
			Stick length (ft in)				Stick length (ft in)				Stick length (ft in)			
			7'5"	8'	8'8"	10'	7'5"	8'	8'8"	10'	7'5"	8'	8'8"	10'
33.5 <sup>2)</sup>	0.98	1,367	■	■	■	■	■	■	■	■	■	■	■	■
41.3 <sup>2)</sup>	1.24	1,565	■	■	■	■	■	■	■	■	■	■	■	■
49.2 <sup>2)</sup>	1.50	1,786	■	■	■	■	■	■	■	■	■	■	■	■
55.1 <sup>2)</sup>	1.77	1,874	■	■	■	■	■	■	■	■	■	■	■	■
59.1 <sup>2)</sup>	1.90	1,940	■	■	■	△	■	■	■	■	■	■	■	■
63.0 <sup>2)</sup>	2.03	2,072	■	■	△	△	■	■	■	■	■	■	■	■
33.5 <sup>3)</sup>	0.98	1,521	■	■	■	■	■	■	■	■	■	■	■	■
41.3 <sup>3)</sup>	1.24	1,764	■	■	■	■	■	■	■	■	■	■	■	■
49.2 <sup>3)</sup>	1.50	2,006	■	■	■	■	■	■	■	■	■	■	■	■
55.1 <sup>3)</sup>	1.77	2,116	■	■	■	■	■	■	■	■	■	■	■	■
59.1 <sup>3)</sup>	1.90	2,205	■	■	■	△	■	■	■	■	■	■	■	■
63.0 <sup>3)</sup>	2.03	2,337	■	■	△	△	■	■	■	■	■	■	■	■
33.5 <sup>4)</sup>	1.05	1,389	■	■	■	■	■	■	■	■	■	■	■	■
41.3 <sup>4)</sup>	1.37	1,587	■	■	■	■	■	■	■	■	■	■	■	■
49.2 <sup>4)</sup>	1.70	1,764	■	■	■	■	■	■	■	■	■	■	■	■
55.1 <sup>4)</sup>	1.96	1,918	■	■	■	△	■	■	■	■	■	■	■	■
59.1 <sup>4)</sup>	2.16	1,962	■	■	△	△	■	■	■	■	■	■	■	■
63.0 <sup>4)</sup>	2.22	2,094	■	△	△	△	■	■	■	■	■	■	■	■

\* Indicated loads are based on ISO 10567 and do not exceed 75% of tipping or 87% of hydraulic capacity, max. stick length without quick coupler, lifted 360° on firm with blocked oscillating axle

<sup>1)</sup> comparable with SAE (heaped)

<sup>2)</sup> Bucket with teeth <sup>3)</sup> Bucket with teeth in HD-version <sup>4)</sup> Bucket with cutting edge (also available in HD-version)

Max. material weight ■ = ≤ 3,034 lb/yd<sup>3</sup>, ■ = ≤ 2,528 lb/yd<sup>3</sup>, △ = ≤ 2,023 lb/yd<sup>3</sup>, - = not authorized

# Lift Capacities

## with Two-Piece Boom 19' HD

		Stick 7'5"		10 ft	15 ft	20 ft	25 ft	30 ft	ft in		
ft	Undercarriage stabilized	rear	front	10 ft		15 ft		20 ft		ft in	
		30	Blade Outriggers	16.1* 16.1*	16.1* 16.1*						16.1* 16.1*
25	Blade Outriggers			18.9* 18.9*	18.9* 18.9*	12.6 15.3*			13.0* 13.0*	13.0* 13.0*	20' 8"
20	Blade Outriggers			19.4* 19.4*	19.4* 19.4*	13.0 17.3			12.0* 12.0*	12.0* 12.0*	24' 7"
15	Blade Outriggers	34.7 35.6*	35.6* 35.6*	19.2 24.5*	19.2 24.5*	12.9 17.1	8.7 12.0		11.7* 11.7*	11.7* 11.7*	26' 11"
10	Blade Outriggers	33.0* 36.7*	36.7* 36.7*	18.6 25.3	18.6 25.3	12.7 16.8	8.7 11.9		10.8 11.9*	10.8 11.9*	28' 1"
5	Blade Outriggers	37.1* 37.1*	37.1* 37.1*	28.0 30.8*	28.0 30.8*	18.6 22.3*	13.2 17.5*		10.5 12.7*	10.5 12.7*	28' 5"
0	Blade Outriggers	32.5 43.7*	43.7* 43.7*	18.1 25.1	18.1 25.1	12.1 16.8	8.0 11.3		10.8 14.0*	10.8 14.0*	27' 8"
-5	Blade Outriggers	31.4 49.1*	49.1* 49.1*	17.4 25.2	17.4 25.2	11.3 15.8	7.7 10.9		11.7 13.3*	11.7 13.3*	26'
-10	Blade Outriggers	31.1 50.4	50.4 50.4*	16.7 24.4	16.7 24.4	10.7 15.2			11.5* 11.5*	11.5* 11.5*	23' 1"
-15	Blade Outriggers	30.4 40.0*	40.0* 40.0*	16.2 19.4*	16.2 19.4*				15.2 17.2*	15.2 17.2*	15' 7"

		Stick 8'		10 ft	15 ft	20 ft	25 ft	30 ft	ft in		
ft	Undercarriage stabilized	rear	front	10 ft		15 ft		20 ft		ft in	
		30	Blade Outriggers	15.7* 15.7*	15.7* 15.7*						15.7* 15.7*
25	Blade Outriggers					12.7 15.6*			15.6* 15.6*	15.6* 15.6*	21' 7"
20	Blade Outriggers			17.6* 17.6*	17.6* 17.6*	13.0 17.4	8.7 11.9		12.0* 12.0*	12.0* 12.0*	25' 4"
15	Blade Outriggers	27.4* 27.4*	27.4* 27.4*	19.2 23.7*	19.2 23.7*	12.8 17.0	8.8 12.0		11.7* 11.7*	11.7* 11.7*	27' 7"
10	Blade Outriggers	33.0* 37.4*	37.4* 37.4*	18.6 25.3	18.6 25.3	12.6 16.7	8.7 12.0		10.8 11.9*	10.8 11.9*	28' 10"
5	Blade Outriggers	36.7* 36.7*	36.7* 36.7*	27.9 30.6*	27.9 30.6*	18.5 22.1*	13.3 17.4*		10.5 12.7*	10.5 12.7*	29'
0	Blade Outriggers	32.5 42.6*	42.6* 42.6*	18.2 24.9	18.2 24.9	12.1 16.8	8.1 11.3		10.3 12.8*	10.3 12.8*	28' 5"
-5	Blade Outriggers	31.3 48.7	48.7 48.7*	17.4 25.1	17.4 25.1	11.4 16.0	7.7 10.9		11.2 13.0*	11.2 13.0*	26' 8"
-10	Blade Outriggers	30.9 50.2	50.2 50.2*	16.8 24.5	16.8 24.5	10.7 15.2			11.4* 11.4*	11.4* 11.4*	23' 11"
-15	Blade Outriggers	30.4 43.7*	43.7* 43.7*	16.1 22.7*	16.1 22.7*				13.0 15.0*	13.0 15.0*	17' 4"

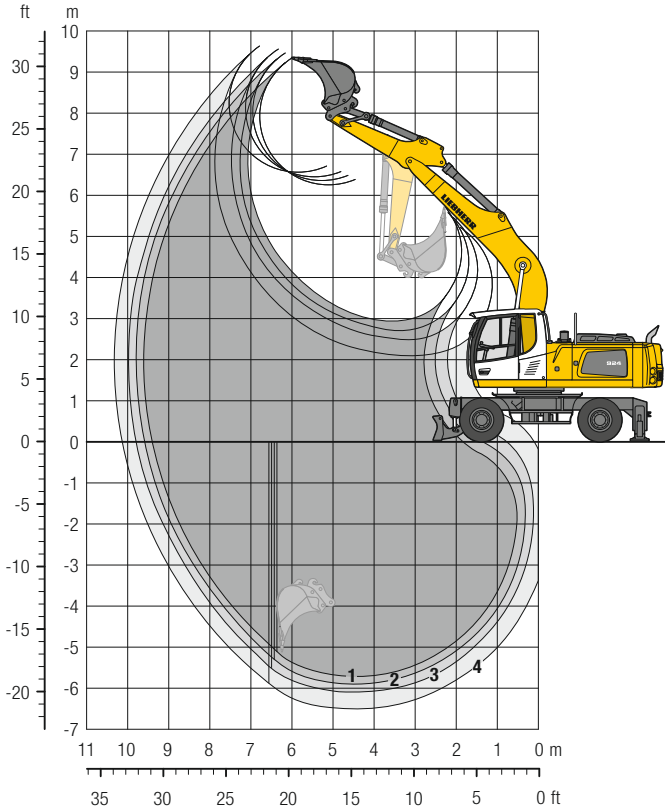
		Stick 8'8"		10 ft	15 ft	20 ft	25 ft	30 ft	ft in		
ft	Undercarriage stabilized	rear	front	10 ft		15 ft		20 ft		ft in	
		30	Blade Outriggers	16.1* 16.1*	16.1* 16.1*						13.3* 13.3*
25	Blade Outriggers					12.9 15.3*			11.0* 11.0*	11.0* 11.0*	22' 6"
20	Blade Outriggers			15.9* 15.9*	15.9* 15.9*	13.0 16.8*	8.8 12.0		10.2* 10.2*	10.2* 10.2*	26'
15	Blade Outriggers	20.3* 20.3*	20.3* 20.3*	20.6* 20.6*	20.6* 20.6*	18.7* 18.7*	13.7 16.1*		10.0* 10.0*	10.0* 10.0*	28' 2"
10	Blade Outriggers	33.1 38.2*	38.2* 38.2*	18.6 25.3	18.6 25.3	12.5 16.7	8.8 12.1		10.1 10.1*	10.1 10.1*	29' 5"
5	Blade Outriggers	36.5* 36.5*	36.5* 36.5*	27.8 30.3*	27.8 30.3*	18.4 21.9*	13.4 17.2*		9.8 10.6*	9.8 10.6*	29' 8"
0	Blade Outriggers	32.3 41.6*	41.6* 41.6*	18.2 24.8	18.2 24.8	12.1 16.6	8.1 11.4		9.9 11.7*	9.9 11.7*	29'
-5	Blade Outriggers	31.3 48.4	48.4 48.4*	17.4 25.1	17.4 25.1	11.5 16.1	7.7 10.9		10.7 12.7*	10.7 12.7*	27' 5"
-10	Blade Outriggers	30.8 50.0	50.0 50.0*	17.0 24.7	17.0 24.7	10.7 15.2			11.2* 11.2*	11.2* 11.2*	24' 8"
-15	Blade Outriggers	30.4 46.6*	46.6* 46.6*	16.1 23.6	16.1 23.6				13.4* 13.4*	13.4* 13.4*	18' 10"

		Stick 10'		10 ft	15 ft	20 ft	25 ft	30 ft	ft in		
ft	Undercarriage stabilized	rear	front	10 ft		15 ft		20 ft		ft in	
		30	Blade Outriggers	11.0* 11.0*	11.0* 11.0*						11.0* 11.0*
25	Blade Outriggers					13.1 13.9*			9.3 9.4*	9.4* 9.4*	24'
20	Blade Outriggers					13.9* 13.9*			8.8* 8.8*	8.8* 8.8*	27' 5"
15	Blade Outriggers			16.4* 16.4*	16.4* 16.4*	12.8 16.9*	9.1 12.3		6.4 8.6*	6.4 8.6*	29' 6"
10	Blade Outriggers	33.3 39.3*	39.3* 39.3*	18.6 25.3	18.6 25.3	12.5 16.6	9.0 12.2		8.7* 8.7*	8.7* 8.7*	30' 7"
5	Blade Outriggers	36.7* 36.7*	36.7* 36.7*	27.7 29.6*	27.7 29.6*	18.3 21.4*	13.5 17.0*		9.2 9.2*	9.2 9.2*	30' 10"
0	Blade Outriggers	32.0 40.3*	40.3* 40.3*	18.0 24.5	18.0 24.5	12.2 16.4	8.3 11.5		9.3 10.0*	9.3 10.0*	30' 2"
-5	Blade Outriggers	31.4 46.9*	46.9* 46.9*	17.4 24.9	17.4 24.9	11.7 16.3	7.8 11.0		10.0 10.0*	10.0 10.0*	28' 8"
-10	Blade Outriggers	30.7 49.2	49.2 49.2*	16.9 24.6	16.9 24.6	10.8 15.3	7.4 10.6		11.1* 11.1*	11.1* 11.1*	26' 1"
-15	Blade Outriggers	30.5 49.7	49.7 49.7*	16.0 23.6	16.0 23.6	10.3 14.9			9.4 11.3*	9.4 11.3*	21' 4"

Height Can be slewed through 360° In longitudinal position of undercarriage Max. reach \* Limited by hydr. capacity

With PowerLift 5,511 psi the lift capacities on the load lift hook of the Liebherr quick coupler SWA 48 without attachment are stated in lb x 1,000 and are valid on a firm, level supporting surface with blocked oscillating axle. These capacities can be slewed through 360° with the undercarriage in the transverse position. Capacities in the longitudinal position of the undercarriage (+/- 15°) are specified over the steering axle with the stabilizers raised and over the rigid axle with the stabilizers down. The values apply when the adjusting cylinder is in the optimal position. Indicated loads based on the ISO 10567 standard and do not exceed 75% of tipping or 87% of hydraulic capacity, or are limited by the permissible load of the load lift hook on the quick coupler (max. 26,500 lb). Without the quick coupler, lift capacities will increase by up to 500 lb.

# Backhoe Bucket with Mono Boom 18'6" HD



## Digging Envelope

with quick coupler		1	2	3	4
Stick length	ft in	7' 5"	8'	8'8"	10'
Max. digging depth	ft in	18' 8"	19'4"	20'	21'4"
Max. reach at ground level	ft in	30'10"	31'6"	32'2"	33'4"
Max. dumping height	ft in	20'10"	21'2"	21'6"	22'
Max. teeth height	ft in	30' 8"	31'	31'4"	31'8"
Min. equipment radius	ft in	12'10"	12'2"	11'4"	10'4"

## Digging Forces

without quick coupler		1	2	3	4
Max. digging force (ISO 6015)	lbf	33,384	31,406	29,652	26,707
Max. breakout force (ISO 6015)	lbf	38,128	38,128	38,128	38,128
	lb	38,140	38,140	38,140	38,140

Max. breakout force with ripper bucket 49,098 lbf (49,160 lb)

## Operating Weight

The operating weight includes the basic machine with 8 tires plus intermediate rings, mono boom 18'6" (HD), stick 8'8", quick coupler SWA 48 and bucket 55.1" / 1.77 yd<sup>3</sup>.

Undercarriage versions	Weight (lb)
A 924 Heavy Lift Litronic with rear blade + front outriggers	58,900
A 924 Heavy Lift Litronic with rear + front outriggers	59,500

## Buckets Machine stability per ISO 10567\* (75% of tipping capacity)

Cutting width in	Capacity ISO 7451 <sup>1)</sup> yd <sup>3</sup>	Weight lb	Stabilizers raised				Rear blade + front outriggers down				Rear + front outriggers down			
			Stick length (ft in)				Stick length (ft in)				Stick length (ft in)			
			7'5"	8'	8'8"	10'	7'5"	8'	8'8"	10'	7'5"	8'	8'8"	10'
33.5 <sup>2)</sup>	0.98	1,367	■	■	■	■	■	■	■	■	■	■	■	■
41.3 <sup>2)</sup>	1.24	1,565	■	■	■	■	■	■	■	■	■	■	■	■
49.2 <sup>2)</sup>	1.50	1,786	■	■	■	■	■	■	■	■	■	■	■	■
55.1 <sup>2)</sup>	1.77	1,874	■	■	■	■	■	■	■	■	■	■	■	■
59.1 <sup>2)</sup>	1.90	1,940	■	■	■	■	■	■	■	■	■	■	■	■
63.0 <sup>2)</sup>	2.03	2,072	■	■	■	■	■	■	■	■	■	■	■	■
33.5 <sup>3)</sup>	0.98	1,521	■	■	■	■	■	■	■	■	■	■	■	■
41.3 <sup>3)</sup>	1.24	1,764	■	■	■	■	■	■	■	■	■	■	■	■
49.2 <sup>3)</sup>	1.50	2,006	■	■	■	■	■	■	■	■	■	■	■	■
55.1 <sup>3)</sup>	1.77	2,116	■	■	■	■	■	■	■	■	■	■	■	■
59.1 <sup>3)</sup>	1.90	2,205	■	■	■	■	■	■	■	■	■	■	■	■
63.0 <sup>3)</sup>	2.03	2,337	■	■	■	■	■	■	■	■	■	■	■	■
33.5 <sup>4)</sup>	1.05	1,389	■	■	■	■	■	■	■	■	■	■	■	■
41.3 <sup>4)</sup>	1.37	1,587	■	■	■	■	■	■	■	■	■	■	■	■
49.2 <sup>4)</sup>	1.70	1,764	■	■	■	■	■	■	■	■	■	■	■	■
55.1 <sup>4)</sup>	1.96	1,918	■	■	■	■	■	■	■	■	■	■	■	■
59.1 <sup>4)</sup>	2.16	1,962	■	■	■	■	■	■	■	■	■	■	■	■
63.0 <sup>4)</sup>	2.22	2,094	■	■	■	△	■	■	■	■	■	■	■	■

\* Indicated loads are based on ISO 10567 and do not exceed 75% of tipping or 87% of hydraulic capacity, max. stick length without quick coupler, lifted 360° on firm with blocked oscillating axle

<sup>1)</sup> comparable with SAE (heaped)

<sup>2)</sup> Bucket with teeth <sup>3)</sup> Bucket with teeth in HD-version <sup>4)</sup> Bucket with cutting edge (also available in HD-version)

Max. material weight ■ = ≤ 3,034 lb/yd<sup>3</sup>, ■ = ≤ 2,528 lb/yd<sup>3</sup>, △ = ≤ 2,023 lb/yd<sup>3</sup>, - = not authorized



# Lift Capacities

## with Mono Boom 18'6" HD

### Stick 7'5"

ft	Undercarriage stabilized		10ft		15ft		20ft		25ft		30ft		ft in
	rear	front											
30	Blade	Outriggers											
	Outriggers	Outriggers											
25	Blade	Outriggers										12.4'	12.4'
	Outriggers	Outriggers										12.4'	12.4'
20	Blade	Outriggers					12.5	16.8*				9.8	11.6*
	Outriggers	Outriggers					16.8*	16.8*				11.6*	11.6*
15	Blade	Outriggers					12.1	16.6	8.5	11.6		8.2	11.3
	Outriggers	Outriggers					18.4*	18.4*	13.2	13.7*		11.7*	11.7*
10	Blade	Outriggers			17.0	24.6	11.4	15.9	8.2	11.3		7.4	10.2
	Outriggers	Outriggers			27.3*	27.3*	18.1	21.0*	12.9	18.0*		11.7	12.2*
5	Blade	Outriggers			15.7	23.1	10.7	15.2	7.9	11.0		7.1	9.9
	Outriggers	Outriggers			26.8	32.3*	17.4	23.5*	12.6	19.2*		11.3	13.4*
0	Blade	Outriggers	16.3*	16.3*	15.0	22.3	10.3	14.7	7.6	10.7		7.2	10.1
	Outriggers	Outriggers	16.3*	16.3*	16.0	34.3*	16.9	25.0*	12.3	19.7*		11.6	15.5*
-5	Blade	Outriggers	27.3	29.1*	14.9	22.1	10.1	14.5				7.9	11.1
	Outriggers	Outriggers	29.1*	29.1*	25.8	33.6*	16.7	24.8*				12.8	19.5*
-10	Blade	Outriggers	27.9	42.1*	15.1	22.4	10.3	14.7				9.6	13.7
	Outriggers	Outriggers	42.1*	42.1*	26.0	30.1*	16.9	22.1*				15.7	20.5*
-15	Blade	Outriggers	42.1*	42.1*	30.1*	30.1*	21.5	22.1*				20.0	20.5*
	Outriggers	Outriggers											

### Stick 8'

ft	Undercarriage stabilized		10ft		15ft		20ft		25ft		30ft		ft in
	rear	front											
30	Blade	Outriggers											
	Outriggers	Outriggers											
25	Blade	Outriggers											11.4'
	Outriggers	Outriggers											11.4'
20	Blade	Outriggers											9.4
	Outriggers	Outriggers											10.7*
15	Blade	Outriggers											7.9
	Outriggers	Outriggers											10.7*
10	Blade	Outriggers			21.1*	21.1*	17.1	24.7	11.4	15.9	8.2	11.3	7.1
	Outriggers	Outriggers			21.1*	21.1*	26.4*	26.4*	18.1	20.4*	12.9	17.6*	11.2*
5	Blade	Outriggers			15.7	23.1	10.7	15.1	7.8	11.0		6.8	9.5
	Outriggers	Outriggers			26.8	31.6*	17.4	23.1*	12.5	18.9*		10.9	12.2*
0	Blade	Outriggers	16.8*	16.8*	15.0	22.2	10.2	14.6	7.6	10.7		6.9	9.7
	Outriggers	Outriggers	16.8*	16.8*	16.8*	34.0*	16.8	24.7*	12.2	19.6*		11.1	14.0*
-5	Blade	Outriggers	27.1	27.9*	14.7	22.0	10.0	14.4				7.5	10.6
	Outriggers	Outriggers	27.9*	27.9*	25.6	33.7*	16.6	24.8*				12.2	17.3*
-10	Blade	Outriggers	27.9*	27.9*	33.7*	33.7*	21.2	24.8*				15.4	17.3*
	Outriggers	Outriggers	27.6	43.3*	14.9	22.2	10.1	14.5				9.1	12.9
-15	Blade	Outriggers	43.3*	43.3*	25.8	30.7*	16.7	22.6*				14.8	19.9*
	Outriggers	Outriggers	43.3*	43.3*	30.7*	30.7*	21.3	22.6*				18.8	19.9*

### Stick 8'8"

ft	Undercarriage stabilized		10ft		15ft		20ft		25ft		30ft		ft in
	rear	front											
30	Blade	Outriggers											
	Outriggers	Outriggers											
25	Blade	Outriggers											10.5'
	Outriggers	Outriggers											10.5'
20	Blade	Outriggers											8.9
	Outriggers	Outriggers											9.9*
15	Blade	Outriggers											7.5
	Outriggers	Outriggers											9.9*
10	Blade	Outriggers			12.1	16.7	8.5	11.7				6.8	9.5
	Outriggers	Outriggers			17.2*	17.2*	13.3	14.9*				9.9*	9.9*
5	Blade	Outriggers			30.8	31.5*	17.2	24.9	11.4	15.9	8.2	11.3	6.8
	Outriggers	Outriggers			31.5*	31.5*	25.5*	25.5*	18.2	19.9*	12.9	17.2*	10.3*
0	Blade	Outriggers			15.8	23.2	10.7	15.1	7.8	10.9		6.5	9.2
	Outriggers	Outriggers			26.9	30.9*	17.4	22.6*	12.5	18.6*		10.5	11.1*
-5	Blade	Outriggers			17.1*	17.1*	14.9	22.2	10.2	14.6	7.5	10.6	6.6
	Outriggers	Outriggers			17.1*	17.1*	25.8	33.7*	16.8	24.5*	12.2	19.4*	10.7
-10	Blade	Outriggers			26.8	26.9*	14.6	21.9	9.9	14.3	7.4	10.5	7.2
	Outriggers	Outriggers			26.9*	26.9*	25.5	33.8*	16.5	24.8*	12.1	19.2*	11.7
-15	Blade	Outriggers			27.3	40.8*	14.7	22.0	10.0	14.4		8.5	12.1
	Outriggers	Outriggers			40.8*	40.8*	25.6	31.1*	16.5	22.9*		13.9	19.4*

### Stick 10'

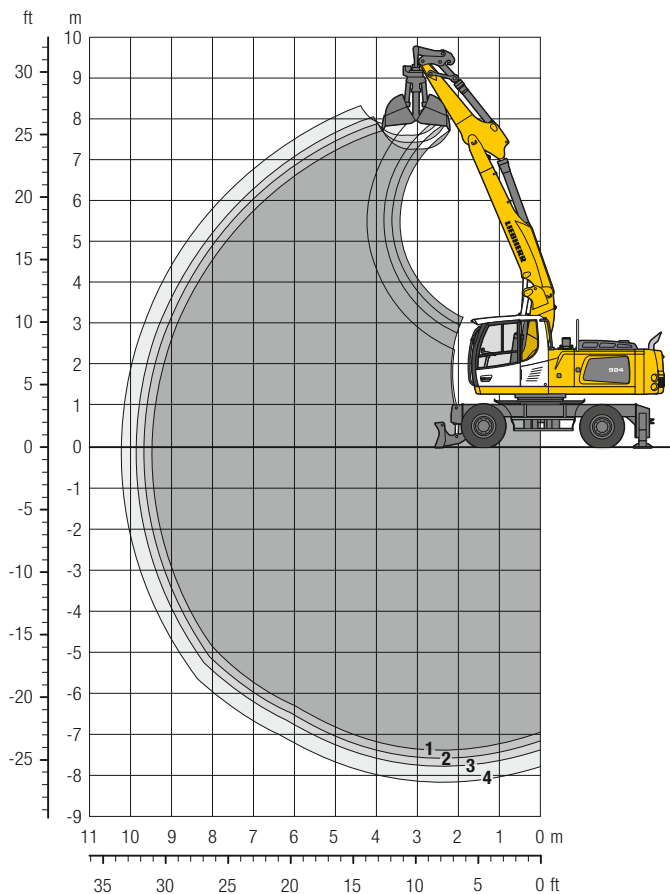
ft	Undercarriage stabilized		10ft		15ft		20ft		25ft		30ft		ft in
	rear	front											
30	Blade	Outriggers											
	Outriggers	Outriggers											
25	Blade	Outriggers											9.0'
	Outriggers	Outriggers											9.0'
20	Blade	Outriggers											8.2
	Outriggers	Outriggers											8.6*
15	Blade	Outriggers											7.0
	Outriggers	Outriggers											8.5*
10	Blade	Outriggers			32.0	36.6*	17.6	23.7*	11.5	16.1	8.2	11.4	6.4
	Outriggers	Outriggers			36.6*	36.6*	23.7*	23.7*	18.3	18.8*	12.9	16.5*	8.9*
5	Blade	Outriggers			16.8*	16.8*	15.9	23.4	10.7	15.2	7.8	10.9	6.1
	Outriggers	Outriggers			16.8*	16.8*	29.5*	29.5*	21.8*	21.8*	15.7	18.0*	9.6*
0	Blade	Outriggers			18.4*	18.4*	14.9	22.2	10.1	14.5	7.4	10.6	6.2
	Outriggers	Outriggers			18.4*	18.4*	33.1*	33.1*	21.4	23.9*	15.3	19.1*	10.0
-5	Blade	Outriggers			25.9*	25.9*	14.5	21.7	9.8	14.2	7.3	10.4	6.6
	Outriggers	Outriggers			25.9*	25.9*	25.4	33.8*	16.4	24.7*	11.9	19.3*	10.8
-10	Blade	Outriggers			26.8	37.0*	14.5	21.7	9.8	14.2		7.7	11.0
	Outriggers	Outriggers			37.0*	37.0*	25.4	32.0*	16.3	23.5*		12.7	17.6*
-15	Blade	Outriggers			27.6	37.9*	14.9	22.2				10.5	15.1
	Outriggers	Outriggers			37.9*	37.9*	25.9	26.6*				17.4	19.4*

Height Can be slewed through 360° In longitudinal position of undercarriage Max. reach \* Limited by hydr. capacity

With PowerLift 5,511 psi the lift capacities on the load lift hook of the Liebherr quick coupler SWA 48 without attachment are stated in metric tons (t) and are valid on a firm, level supporting surface with blocked oscillating axle. These capacities can be slewed through 360° with the undercarriage in the transverse position. Capacities in the longitudinal position of the undercarriage (+/- 15°) are specified over the steering axle with the stabilizers raised and over the rigid axle with the stabilizers down. Indicated loads based on the ISO 10567 standard and do not exceed 75% of tipping or 87% of hydraulic capacity, or are limited by the permissible load of the load lift hook on the quick coupler (max. 26,500 lb). Without the quick coupler, lift capacities will increase by up to 500 lb.

# Clamshell Grab

## with Two-Piece Boom 19' HD



### Digging Envelope

with quick coupler		1	2	3	4
Stick length	ft in	7' 5"	8'	8' 8"	10'
Max. digging depth	ft in	24' 1"	24' 9"	25' 5"	26' 9"
Max. reach at ground level	ft in	31' 2"	31' 8"	32' 4"	33' 8"
Max. dumping height	ft in	23' 11"	24' 5"	24' 11"	25' 11"

### Clamshell Grab GM 10B

Max. tooth force	16,411 lbf (16,300 lb)
Max. torque of hydr. swivel	1,298 lbf ft

### Operating Weight

The operating weight includes the basic machine with 8 tires plus intermediate rings, two-piece boom 19' (HD), stick 8', quick coupler SWA 48 and clamshell grab GM 10B/1.31 yd<sup>3</sup> (39.4" without ejector).

Undercarriage versions	Weight (lb)
A 924 Heavy Lift Litronic <sup>®</sup> with rear blade + front outriggers	60,000
A 924 Heavy Lift Litronic <sup>®</sup> with rear + front outriggers	60,600

### Clamshell Grab GM 10B Machine stability per ISO 10567\* (75% of tipping capacity)

Width of clamshells in	Capacity yd <sup>3</sup>	Weight lb	Stabilizers raised				Rear blade + front outriggers down				Rear + front outriggers down			
			Stick length (ft in)				Stick length (ft in)				Stick length (ft in)			
			7'5"	8'	8'8"	10'	7'5"	8'	8'8"	10'	7'5"	8'	8'8"	10'
12.6" <sup>(1)</sup>	0.22	1,698	■	■	■	■	■	■	■	■	■	■	■	■
15.7" <sup>(1)</sup>	0.29	1,808	■	■	■	■	■	■	■	■	■	■	■	■
23.6" <sup>(1)</sup>	0.46	1,896	■	■	■	■	■	■	■	■	■	■	■	■
31.5" <sup>(1)</sup>	0.59	2,006	■	■	■	■	■	■	■	■	■	■	■	■
39.4" <sup>(1)</sup>	0.78	2,138	■	■	■	■	■	■	■	■	■	■	■	■
39.4" <sup>(1)(3)</sup>	1.31	2,293	■	■	■	■	■	■	■	■	■	■	■	■
59.1" <sup>(1)(3)</sup>	1.96	2,557	■	■	△	△	■	■	■	■	■	■	■	■
70.9" <sup>(1)(3)</sup>	2.35	2,822	△	△	-	-	■	■	■	■	■	■	■	■
12.6" <sup>(2)</sup>	0.22	1,808	■	■	■	■	■	■	■	■	■	■	■	■
15.7" <sup>(2)</sup>	0.29	1,940	■	■	■	■	■	■	■	■	■	■	■	■
23.6" <sup>(2)</sup>	0.39	2,094	■	■	■	■	■	■	■	■	■	■	■	■
31.5" <sup>(2)</sup>	0.59	2,227	■	■	■	■	■	■	■	■	■	■	■	■

\* Indicated loads are based on ISO 10567 and do not exceed 75% of tipping or 87% of hydraulic capacity, max. stick length without quick coupler, lifted 360° on firm with blocked oscillating axle

<sup>1)</sup> without ejector

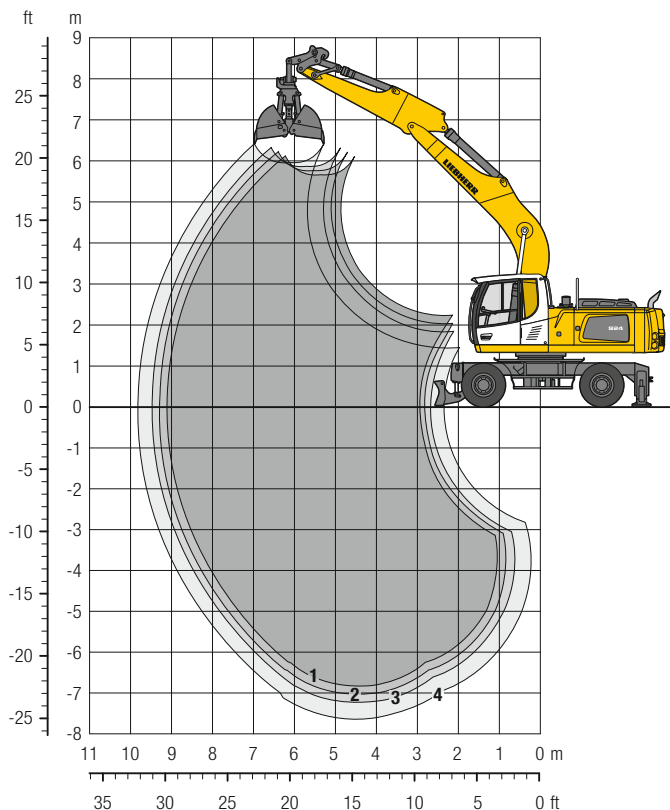
<sup>2)</sup> with ejector

<sup>3)</sup> Shells for loose material

Max. material weight ■ = ≤ 3,034 lb/yd<sup>3</sup>, ■ = ≤ 2,528 lb/yd<sup>3</sup>, △ = ≤ 2,023 lb/yd<sup>3</sup>, - = not authorized

# Clamshell Grab

## with Mono Boom 18'6" HD



### Digging Envelope

with quick coupler		1	2	3	4
Stick length	ft in	7' 5"	8'	8'8"	10'
Max. digging depth	ft in	22' 4"	23'	23'7"	24'11"
Max. reach at ground level	ft in	29'10"	30'4"	31'	32' 2"
Max. dumping height	ft in	18' 8"	19'	19'4"	19' 8"

### Clamshell Grab GM 10B

Max. tooth force	16,411 lbf (16,300 lb)
Max. torque of hydr. swivel	1,298 lbf ft

### Operating Weight

The operating weight includes the basic machine with 8 tires plus intermediate rings, mono boom 18'6" (HD), stick 88", quick coupler SWA 48 and clamshell grab GM 10B/1.31 yd<sup>3</sup> (39.4" without ejector).

Undercarriage versions	Weight (lb)
A 924 Heavy Lift Litronic <sup>®</sup> with rear blade + front outriggers	59,100
A 924 Heavy Lift Litronic <sup>®</sup> with rear + front outriggers	59,700

### Clamshell Grab GM 10B Machine stability per ISO 10567\* (75% of tipping capacity)

Width of clamshells in	Capacity yd <sup>3</sup>	Weight lb	Stabilizers raised				Rear blade + front outriggers down				Rear + front outriggers down					
			Stick length (ft in)				Stick length (ft in)				Stick length (ft in)					
			7'5"	8'	8'8"	10'	7'5"	8'	8'8"	10'	7'5"	8'	8'8"	10'		
12.6 <sup>(1)</sup>	0.22	1,698	■	■	■	■	■	■	■	■	■	■	■	■	■	■
15.7 <sup>(1)</sup>	0.29	1,808	■	■	■	■	■	■	■	■	■	■	■	■	■	■
23.6 <sup>(1)</sup>	0.46	1,896	■	■	■	■	■	■	■	■	■	■	■	■	■	■
31.5 <sup>(1)</sup>	0.59	2,006	■	■	■	■	■	■	■	■	■	■	■	■	■	■
39.4 <sup>(1)</sup>	0.78	2,138	■	■	■	■	■	■	■	■	■	■	■	■	■	■
39.4 <sup>(1)(3)</sup>	1.31	2,293	■	■	■	■	■	■	■	■	■	■	■	■	■	■
59.1 <sup>(1)(3)</sup>	1.96	2,557	■	■	■	△	■	■	■	■	■	■	■	■	■	■
70.9 <sup>(1)(3)</sup>	2.35	2,822	△	△	△	-	■	■	■	■	■	■	■	■	■	■
12.6 <sup>(2)</sup>	0.22	1,808	■	■	■	■	■	■	■	■	■	■	■	■	■	■
15.7 <sup>(2)</sup>	0.29	1,940	■	■	■	■	■	■	■	■	■	■	■	■	■	■
23.6 <sup>(2)</sup>	0.39	2,094	■	■	■	■	■	■	■	■	■	■	■	■	■	■
31.5 <sup>(2)</sup>	0.59	2,227	■	■	■	■	■	■	■	■	■	■	■	■	■	■

\* Indicated loads are based on ISO 10567 and do not exceed 75% of tipping or 87% of hydraulic capacity, max. stick length without quick coupler, lifted 360° on firm with blocked oscillating axle

<sup>1)</sup> without ejector

<sup>2)</sup> with ejector

<sup>3)</sup> Shells for loose material

Max. material weight ■ = ≤ 3,034 lb/yd<sup>3</sup>, ■ = ≤ 2,528 lb/yd<sup>3</sup>, △ = ≤ 2,023 lb/yd<sup>3</sup>, - = not authorized

# Equipments

## Ditch Cleaning Buckets

### Ditch Cleaning Buckets Machine stability per ISO 10567\* (75% of tipping capacity)

Cutting width in	Capacity ISO 7451 <sup>1)</sup> yd <sup>3</sup>	Weight lb	Stabilizers raised				Rear blade + front outriggers down				Rear + front outriggers down			
			Stick length (ft in)				Stick length (ft in)				Stick length (ft in)			
			7'5"	8'	8'8"	10'	7'5"	8'	8'8"	10'	7'5"	8'	8'8"	10'
<b>Two-piece boom 19' HD</b>														
59.1" <sup>3)</sup>	0.65	948	■	■	■	■	■	■	■	■	■	■	■	■
63.0" <sup>2)</sup>	1.05	1,874	■	■	■	■	■	■	■	■	■	■	■	■
78.7" <sup>2)</sup>	0.65	1,521	■	■	■	■	■	■	■	■	■	■	■	■
78.7" <sup>3)</sup>	0.92	1,146	■	■	■	■	■	■	■	■	■	■	■	■
78.7" <sup>2)</sup>	0.92	1,940	■	■	■	■	■	■	■	■	■	■	■	■
78.7" <sup>3)</sup>	1.57	1,411	■	■	■	■	■	■	■	■	■	■	■	■
78.7" <sup>2)</sup>	1.31	2,072	■	■	■	■	■	■	■	■	■	■	■	■
86.6" <sup>2)</sup>	1.05	1,940	■	■	■	■	■	■	■	■	■	■	■	■
86.6" <sup>2)</sup>	1.50	2,161	■	■	■	■	■	■	■	■	■	■	■	■
86.6" <sup>2)</sup>	1.83	2,205	■	■	■	△	■	■	■	■	■	■	■	■
94.5" <sup>2)</sup>	1.11	1,962	■	■	■	■	■	■	■	■	■	■	■	■
94.5" <sup>3)</sup>	1.11	1,345	■	■	■	■	■	■	■	■	■	■	■	■
94.5" <sup>3)</sup>	1.63	2,205	■	■	■	■	■	■	■	■	■	■	■	■
<b>Mono boom 18'6" HD</b>														
59.1" <sup>3)</sup>	0.65	948	■	■	■	■	■	■	■	■	■	■	■	■
63.0" <sup>2)</sup>	1.05	1,874	■	■	■	■	■	■	■	■	■	■	■	■
78.7" <sup>2)</sup>	0.65	1,521	■	■	■	■	■	■	■	■	■	■	■	■
78.7" <sup>3)</sup>	0.92	1,146	■	■	■	■	■	■	■	■	■	■	■	■
78.7" <sup>2)</sup>	0.92	1,940	■	■	■	■	■	■	■	■	■	■	■	■
78.7" <sup>3)</sup>	1.57	1,411	■	■	■	■	■	■	■	■	■	■	■	■
78.7" <sup>2)</sup>	1.31	2,072	■	■	■	■	■	■	■	■	■	■	■	■
86.6" <sup>2)</sup>	1.05	1,940	■	■	■	■	■	■	■	■	■	■	■	■
86.6" <sup>2)</sup>	1.50	2,161	■	■	■	■	■	■	■	■	■	■	■	■
86.6" <sup>2)</sup>	1.83	2,205	■	■	■	■	■	■	■	■	■	■	■	■
94.5" <sup>2)</sup>	1.11	1,962	■	■	■	■	■	■	■	■	■	■	■	■
94.5" <sup>3)</sup>	1.11	1,345	■	■	■	■	■	■	■	■	■	■	■	■
94.5" <sup>3)</sup>	1.63	2,205	■	■	■	■	■	■	■	■	■	■	■	■

\* Indicated loads are based on ISO 10567 and do not exceed 75% of tipping or 87% of hydraulic capacity, max. stick length without quick coupler, lifted 360° on firm with blocked oscillating axle

<sup>1)</sup> comparable with SAE (heaped)

<sup>2)</sup> with 2 x 50° rotator

<sup>3)</sup> rigid ditch cleaning bucket

Max. material weight ■ = ≤ 3,034 lb/yd<sup>3</sup>, ■ = ≤ 2,528 lb/yd<sup>3</sup>, △ = ≤ 2,023 lb/yd<sup>3</sup>, - = not authorized

# Equipments

## Tilt Buckets

### Tilt Buckets Machine stability per ISO 10567\* (75% of tipping capacity)

Cutting width in	Capacity ISO 7451 <sup>1)</sup> yd <sup>3</sup>	Weight lb	Stabilizers raised				Rear blade + front outriggers down				Rear + front outriggers down			
			Stick length (ft in)				Stick length (ft in)				Stick length (ft in)			
			7'5"	8'	8'8"	10'	7'5"	8'	8'8"	10'	7'5"	8'	8'8"	10'
<b>Two-piece boom 19' HD</b>														
59.1 <sup>2)</sup>	1.57	2,138	■	■	■	■	■	■	■	■	■	■	■	■
63.0 <sup>2)</sup>	1.05	1,808	■	■	■	■	■	■	■	■	■	■	■	■
63.0 <sup>2)</sup>	1.31	1,962	■	■	■	■	■	■	■	■	■	■	■	■
63.0 <sup>2)</sup>	1.77	2,138	■	■	■	■	■	■	■	■	■	■	■	■
63.0 <sup>2)</sup>	2.03	2,491	■	■	△	△	■	■	■	■	■	■	■	■
<b>Mono boom 18'6" HD</b>														
59.1 <sup>2)</sup>	1.57	2,138	■	■	■	■	■	■	■	■	■	■	■	■
63.0 <sup>2)</sup>	1.05	1,808	■	■	■	■	■	■	■	■	■	■	■	■
63.0 <sup>2)</sup>	1.31	1,962	■	■	■	■	■	■	■	■	■	■	■	■
63.0 <sup>2)</sup>	1.77	2,138	■	■	■	■	■	■	■	■	■	■	■	■
63.0 <sup>2)</sup>	2.03	2,491	■	■	■	△	■	■	■	■	■	■	■	■

\* Indicated loads are based on ISO 10567 and do not exceed 75% of tipping or 87% of hydraulic capacity, max. stick length without quick coupler, lifted 360° on firm with blocked oscillating axle

<sup>1)</sup> comparable with SAE (heaped)

<sup>2)</sup> with 2 x 50° rotator

Max. material weight ■ = ≤ 3,034 lb/yd<sup>3</sup>, ■ = ≤ 2,528 lb/yd<sup>3</sup>, △ = ≤ 2,023 lb/yd<sup>3</sup>, - = not authorized

# Equipment

## Undercarriage

Dual-circuit braking system	•
Rear stabilizer blade + front outriggers	+
Digging brake, automatic	•
Tires (twin tires) Mitas EM 22	•
Individual control outriggers	+
Travel speed levels (four)	•
Load holding valve on each stabilization cylinder	•
Powershift transmission, semiautomatic	•
Parking brake, maintenance-free	•
Shuttle axle lock, automatic	•
Rear outriggers + front stabilizer blade	+
Rear + front outriggers	+
Tires, variants	+
Protection for piston rods, stabilizer cylinder	+
Storage compartment left – lockable	•
Storage compartment right – lockable	+
Undercarriage EW 9'	•
Tool equipment, extended	+

## Uppercarriage

Uppercarriage right side light, 1 piece, LED	+
Uppercarriage rear light, 2 pieces, LED	+
Refuelling system with filling pump	+
Main battery switch for electrical system	•
Engine hood with gas spring	•
Amber beacon, at uppercarriage, LED double flash	+
Service doors, lockable	•

## Hydraulic System

Shut-off valve between hydraulic tank and pump(s)	•
Pressure test fittings	•
Accumulator for controlled lowering of the equipment with the engine shut down	•
Hydraulic oil filter with integrated microfilter	•
Liebherr hydraulic oil from –4 °F to +104 °F	•
Liebherr hydraulic oil, biologically degradable	+
Liebherr hydraulic oil, specially for warm or cold regions	+
Bypass filter	+
PowerLift	•
Switchover high pressure circuit and tipping cylinder	+
Switchover high pressure circuit and two-piece boom	+

## Diesel Engine

Fuel anti-theft device	+
Liebherr particle filter	+
Reversible fan drive, fully automatic	+
Air pre-filter with dust discharge	+
Automatic engine shut-down (time adjustable)	+
Preheating fuel	+

## Operator's Cab

Storage compartment	•
Stabilizer, proportional control on left joystick	•
Cab lights rear, LED	+
Cab lights front, halogen (under rain cover)	•
Cab lights front, LED (above rain cover)	+
Cab lights front, LED (under rain cover)	+
Exterior mirror, electrical adjustable, with heating	+
Mechanical hour meters, readable from outside the cab	•
Roof window made from impact-resistant laminated safety glass	+
Slewing gear brake Comfort, button on the left or right joystick	+
Slewing gear brake, rocker switch in the right joystick	•
Operator's seat Standard	•
Operator's seat Comfort	+
Operator's seat Premium	+
Driving alarm (acoustic signal is emitted during travel, can be switched ON/OFF)	+
Fire extinguisher	+
Front screen made from impact-resistant laminated safety glass – not adjustable	+
Windscreen retractable (including upper part)	•
Intermittent windscreen wiper with wiper washer	•
Cruise control	•
Rubber floor mat, removable	•
Dome light	•
Joystick steering	+
Coat hook	•
Automatic air conditioning	•
Fuel consumption indicator	•
Electric cooler	+
Steering wheel, wide version (cost-neutral option)	+
Steering column adjustable horizontally	•
LiDAT, vehicle fleet management	•
Emergency exit rear window	•
Positioning swing brake	+
Proportional control	•
Radio Comfort, control via display with handsfree set	+
Preparation for radio installation	•
Rain cover over front window opening	•
ROPS cab protection	•
Back-up alarm (acoustic signal is emitted traveling backward, can not be switched off)	+
Amber beacon, on cabin, LED double flash	+
All tinted windows	•
Windscreen wiper, roof	+
Windshield wiper, entire windscreen	•
Door with sliding window	•
Top guard	+
Front guard, adjustable	+
Right side window and windshield made from laminated safety glass	•
Sun visor	+
Sun blind	•
Auxiliary heating, adjustable (week time switch)	+
Left control console, folding	•
Electronic immobilizer	+
Cigarette lighter	•



## Equipment

Boom lights, 2 pieces, halogen	•
Boom lights, 2 pieces, LED	+
Stick lights, 2 pieces, LED	+
High pressure circuit incl. unpressurized return line and Tool Control	+
Electronic lift limitation	•
Security for hoist cylinder for hydraulic attachments	+
Load holding valve bucket cylinder	+
Load lug on stick	+
Leak oil line, additional for attachments	+
Liebherr ditch cleaning bucket	+
Liebherr quick coupler, hydraulic or mechanical	+
Liebherr tilt bucket	+
Liebherr tilt rotator	+
Liebherr sorting grab	+
Liebherr backhoe bucket	+
Liebherr tooth system	+
Liebherr clamshell grab	+
Medium pressure circuit incl. lines	+
Mono boom, HD version	+
Pipe fracture safety valves hoist cylinders	•
Pipe fracture safety valve stick cylinder	•
Return line, pressureless (in high pressure circuit option included)	+
Hose quick coupling at end of stick	•
Quick coupling system LIKUFIX	+
Protection for bottom side of stick	+
Tool Control, 20 attachment adjustments selectable over the display	+
Overload warning device	•
Two-piece boom, HD version	+



## Complete Machine

<b>Lubrication</b>	
Lubrication undercarriage, manually – decentralized (grease points)	•
Lubrication undercarriage, manually – centralized (one grease point)	+
Central lubrication system for uppercarriage and equipment, automatically (without quick coupler and connecting link) *	•
Central lubrication system, extension for quick coupler	+
Central lubrication system, extension for connecting link	+
<b>Special coating</b>	
Custom painting for attachments	+
Special coating, variants	+
<b>Monitoring</b>	
Rear view monitoring with camera	•
Side view monitoring with camera	•
Skyview 360° (side camera not available)	+

• = Standard, + = Option

\* = country-dependent

Options and / or special equipments, supplied by vendors other than Liebherr, are only to be installed with the knowledge and approval of Liebherr in order to retain warranty.

# The Liebherr Group of Companies



## Diverse Product Range

The Liebherr Group is one of the largest construction equipment manufacturers in the world. Liebherr's quality products and services hold a high reputation in many industries. The wide range includes domestic appliances, aerospace and transportation systems, machine tools and maritime cranes.

## Exceptional Customer Benefit

Every product line provides a complete range of models in many different versions. With both their technical excellence and superior quality, Liebherr products offer customers the highest benefits in practical applications.

## State-of-the-art Technology

Liebherr attributes great importance to the product areas of core technology and components, in order to achieve its consistent, top-quality products. Important modules and components are developed and manufactured in-house, for instance, the entire drive and control technology for the construction equipment and mining trucks.

## Worldwide and Family-Owned

Hans Liebherr founded the Liebherr family company in 1949. Since that time, the enterprise has steadily grown to a group of more than 130 companies with nearly 44,000 employees located on all continents. The corporate headquarters of the Group is Liebherr-International AG in Bulle, Switzerland. The Liebherr family is the sole owner of the company.

[www.liebherr.us](http://www.liebherr.us)

## Liebherr-Hydraulikbagger GmbH

Liebherrstraße 12, D-88457 Kirchdorf/Iller  
☎ +49 7354 80-0, Fax +49 7354 80-7294  
[www.liebherr.com](http://www.liebherr.com), E-Mail: [info.lhb@liebherr.com](mailto:info.lhb@liebherr.com)  
[www.facebook.com/LiebherrConstruction](https://www.facebook.com/LiebherrConstruction)